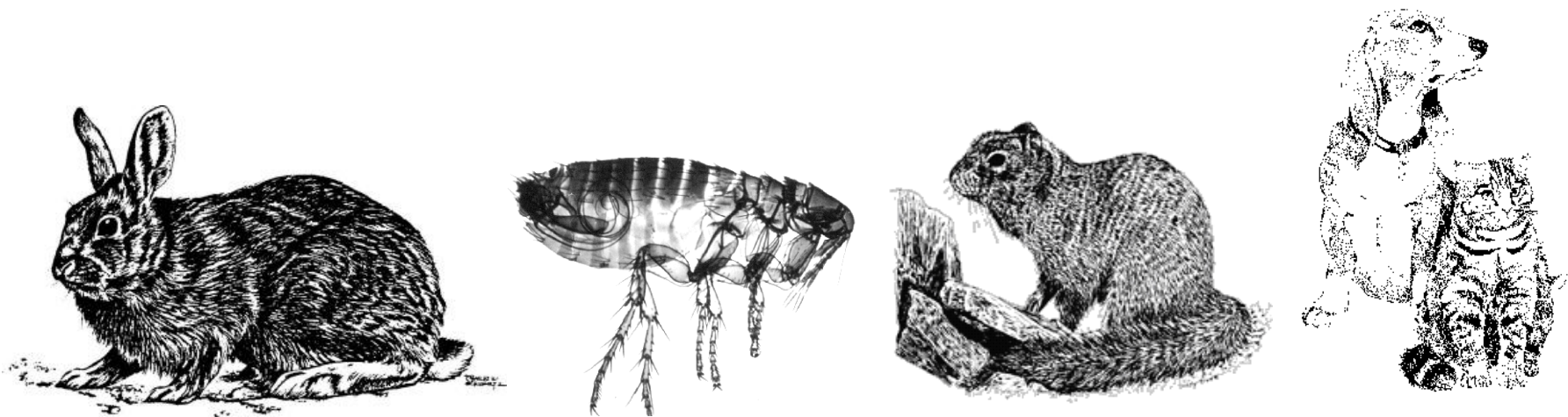


# PUBLIC NOTICE: PLAGUE WARNING



Plague is in this area. Plague can be **fatal** to people and pets unless diagnosed and treated.

Plague is caused by bacteria that can be transmitted by fleas and contact with infected animals, such as rodents, rabbits, and cats.

## **TO REDUCE YOUR RISK OF GETTING PLAGUE if you use this area**

- Avoid contact with wild animals; don't touch sick or dead animals
- Use flea control products on pets; prevent pets from roaming and hunting
- Take sick pets to a veterinarian
- Use insect repellent (DEET on skin or clothes, permethrin on clothes)
- CONSULT A DOCTOR **IMMEDIATELY** IF YOU SUDDENLY BECOME ILL
  - Symptoms of plague include fever, chills, headache, muscle pain, weakness, and sometimes buboes (tender and swollen lymph nodes in groin, armpit, or neck)
  - The earlier you see a doctor and get appropriate treatment, the better chance of recovery

For more information about plague, see [www.cdc.gov/plague/](http://www.cdc.gov/plague/).

**Central District Health Department**  
**Boise Office: 208-327-8625**

**Idaho Dept. of Fish and Game**  
**Southwest Regional Office: 208-465-8465**

State Offices are open 8:00 am – 5:00 pm Monday through Friday and closed on holidays.